

Model-to-Execute

ALIGN BUSINESS AND IT WITH ARIS AND WEBMETHODS

Understanding Business Process Management (BPM) as a management practice includes both organizational and technical implementation projects. This may uncover the following challenges:

- How will business requirements be implemented?
- How will business and IT work in concert?
- How will work progress and be synchronized between business and IT?
- How will transparency be assured during implementation?
- How will a change request for already-implemented processes be handled?

For these challenges, Software AG recommends a Model-to-Execute (M2E) approach. While Business Process Analysis (BPA) targets organizational change management, M2E gives you

guidance on how to use your business process models as a requirements basis for process automation.

With business units documenting their business process-related requirements, the challenge of process realization is within the realm/context of implementation. The challenge is really the operational “doing” of transforming the process-oriented requirement specification into an operational application.

Such an approach combines tool support and a procedural governance model and helps to achieve efficient, measurable and traceable results when transforming business processes into executable processes. M2E takes over all essential governance tasks, involves stakeholders at the right time and assures transparency during the entire transformation.

KEY FEATURES

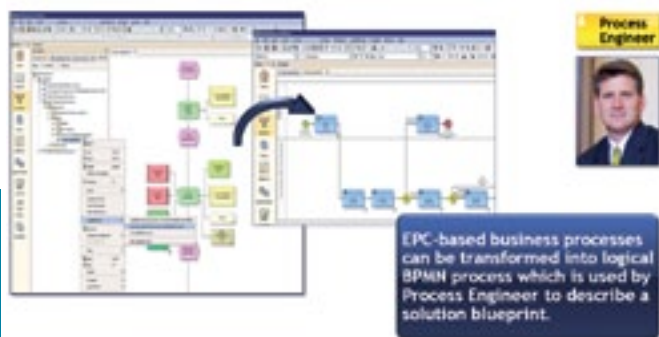
Continuous Alignment of Business Process and Technical Process

Business processes are modeled as Event-driven Process Chain (EPC) to describe the WHAT—the business point of view being steered by business strategy. The models are easy to understand and have a high degree of flexibility in their process structure and are the basis for M2E.

In the M2E context, business process models represent the requirements view. They describe what the process owner expects from the implementation team. All information gathered and specified in an EPC model can be seamlessly passed on to the technical counterparts.

With Business Process Modeling Notation (BPMN) 2.0, ARIS provides not only a standard for executable process modeling but also a transformation mechanism that automatically converts your EPC into a BPMN 2.0 model.

As a next step, the logical model is now transferred to webMethods BPMS where a technical process developer continues the implementation work with webMethods-specific technical enhancements, such as screen flow design and task assignment.



Transformation of EPC-based Business Model into BPMN Logical Model



Sharing Logical Design with IT—Roundtrip Collaboration of BPMN Model with webMethods

Keeping Business and IT in Sync

The business process model and technical process models are very likely to diverge again over the course of the project. While most modifications in webMethods will be very technical, some of them may also impact the business processes. Also vice versa, new business requirements may emerge and added to the business process models. As a result, a “BPM gap” between business and IT opens up again.

M2E closes this gap by offering a bidirectional, collaborative approach between business and IT with tools such as:

- Governance workflow, which controls changes on both sides, notifies stakeholders via email and assigns change management tasks (e.g., review, update, re-import process) to both ARIS and webMethods users
- Model round-tripping, which means the BPMN model can be continuously kept in sync in both ARIS and webMethods without losing any information
- Conflict resolution/merge view, which allows changes in the business process model and/or the technical model to be merged into the logical BPMN model where they are marked visually. The user sees changes listed for his approval or rejection

- Review cycle triggered by the webMethods process developer to explicitly ask the process engineer for his approval
- Ad-hoc collaboration to invite all process stakeholders to a virtual modeling session in ARIS where they can discuss and model the EPC or BPMN process remotely as a team

These capabilities help business and IT to stay aligned on their process models and join their forces for a continuous process improvement. Instead of enforcing all parties to agree to one BPM toolset, the solution lets each party use its own tools and notations while providing synchronization, collaboration and translation mechanisms.

The underlying governance workflow facilitates collaboration and communication between the line of business, BPM experts and IT:

- It keeps them updated (by emails) on the current activities of their counterparts
- It controls and assigns modeling, development and review tasks by integrated task lists
- It keeps processes and services in ARIS and webMethods in sync by the tight integration of CentraSite

KEY BENEFITS

Realize real process collaboration across a governed process life cycle. At any stage every stakeholder can see what the other stakeholders are doing. The process owner can control who can change what and when and who is notified about those changes. Business and IT communicate using the same process model and, as soon as a stakeholder changes some element of the process, others in the extended team are notified or asked for approval and the changes are available in the executable model.

M2E enables your organization to:

Synchronize operational business goals and corporate strategy with IT needs

Establish efficient, agile and transparent processes that are driven by the business and rapidly implemented and changed by IT

Build a framework for an efficient BPM approach and for the analysis of the weak points and optimization potential in a process landscape

Give business the control it seeks over IT implementations—while ensuring IT is a proactive partner in driving the right change throughout the enterprise

ABOUT SOFTWARE AG

Software AG is the global leader in Business Process Excellence. Our 40 years of innovation include the invention of the first high-performance transactional database, Adabas; the first business process analysis platform, ARIS; and the first B2B server and SOA-based integration platform, webMethods.

We offer our customers end-to-end Business Process Management (BPM) solutions delivering low Total-Cost-of-Ownership and high ease of use. Our industry-leading brands, ARIS, webMethods, Adabas, Natural, CentraSite, Terracotta and IDS Scheer Consulting, represent a unique portfolio encompassing: process strategy, design, integration and control; SOA-based integration and data management; process-driven SAP implementation; and strategic process consulting and services.

Software AG – Get There Faster

© 2012 Software AG. All rights reserved. Software AG and all Software AG products are either trademarks or registered trademarks of Software AG. Other product and company names mentioned herein may be the trademarks of their respective owners.